

# Conditions for Rejection of Poultry at Post Mortem

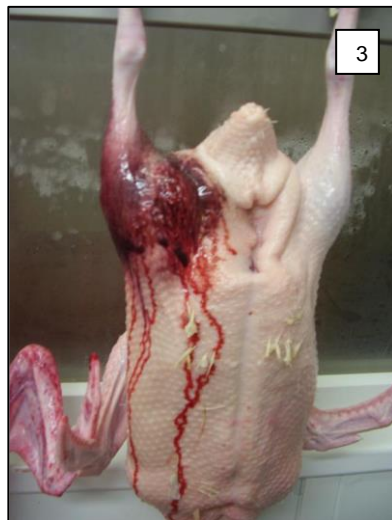
## Bruising, Dislocations and Fractures

### Post Mortem Disposition



**Figure 1:** Two end of lay hens showing major lesions probably caused by rough handling during catching.

**Figure 2:** Breast haematoma



**Figure 3:** Open fracture on a duck leg.

**Figure 4:** Old lesion showing a protruding broken wing bone.

### FSS Responsibilities

#### Post Mortem Disposition

**Total rejection** if the lesion is severe and extensive.

**Partial rejection** if localised.

#### Recording of the condition

The condition must be recorded on the "Bruising/Fractures" entry under Post-Mortem Inspection on OWS.

## **Further Information**

### **Description**

Carcases or part of carcasses with traumatic damage such as haemorrhages, bruising, dislocation and fractures.

- Ante-mortem injuries
  - Always on live birds.
- Injuries during slaughter
  - Always on stunned birds.
- Processing (post-mortem)
  - Always on dead birds.

### **Causes**

#### **Ante-mortem injuries**

This will include traumatic events which occurred on farm, during catching, transport, modules' de-stacking and shackling. More chronic damage is rare as these birds would normally be culled on farm, but would show as a healing lesion which will be noted by green colour of the lesions. These lesions are those which result in welfare issues.

#### **Injuries during slaughter**

This will include injuries incurred during electrical stunning, whilst confined in a controlled atmosphere environment (CAS/CAK) as a consequence of involuntary movements and inaccuracies in gas mixtures. These need to be addressed immediately to make sure that the birds are properly stunned.

#### **Injuries during processing**

These are injuries which are caused by machine activity during carcass processing. These issues are a quality issue.

### **Comments from Inspection Teams**

It is important to differentiate between ante and post-mortem carcass damage. Ante-mortem indicates possible welfare issues on farm and/or prior to slaughter and the bleeding station (i.e. up to the point of death).

Broken bones with no bruising evidences machine damage. Record part rejects as this may be indicative of a welfare problem at the farm, transport and/or hanging area.

Commercially it may be preferable to leave the trimming of parts to further on in the cutting plant. This must still be agreed by the OV with the FBO.

### **What is the data on rejects used for?**

It allows FSS and the FBO to monitor welfare problems that may have occurred during catching, transport, hang-on, or on-line environment. It also provides information on welfare on the farm via number of older bruises (green) and fractures.

### **Acknowledgements to:**

Steve Sagar (LV), British Veterinary Poultry Association

**Pictures:** Rebeca Garcia (VA); Asier Pagazaurtundua (VM) and Carla Novau (OV)